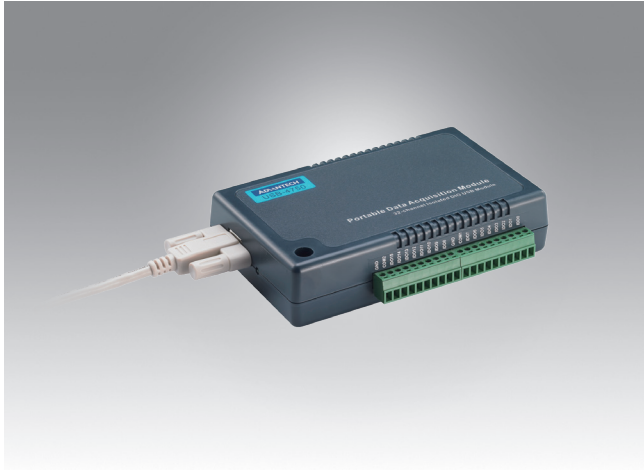


USB-4750

USB-4761

32-Ch Isolated Digital I/O USB Module

8-Ch Relay, 8-Ch Isolated Digital Input USB Module



USB-4750



Features

- Compatible with USB 1.1/2.0
- Bus powered
- 16 x isolated digital input and 16 x digital output channels
- High voltage isolation on all channels (2,500 V_{DC})
- High sink current on isolated output channels (200 mA/channel)
- Supports 5 ~ 60 V_{DC} isolated input channels
- Interrupt handling capability
- Timer/counter capability
- Suitable for DIN rail mounting
- 1 x Lockable USB cable included for connection security

Specifications

Isolated Digital Input

- Channels** 16
- Input Voltage** Logic 0: 2 V max.
Logic 1: 5 V min. (60 V max.) or dry contact
- Interruptible Channels** 2
- Isolation Protection** 2,500 V_{DC}

Isolated Digital Output

- Channels** 16
- Output Type** Sink (NPN)
- Isolation Protection** 2,500 V_{DC}
- Output Voltage** 5 ~ 40 V_{DC}
- Sink Current** 200 mA max. per channel

Isolated Counter

- Channels** 2
- Resolution** 32 bit
- Max. Input Frequency** 1 kHz
- Isolation Protection** 2,500 V_{DC}

General

- Bus Type** USB 1.1/2.0
- I/O Connector** Onboard screw terminal
- Dimensions (L x W x H)** 132 x 80 x 32 mm (5.2" x 3.15" x 1.26")
- Power Consumption** Typical: 5 V @ 300 mA
Max.: 5 V @ 600 mA
- Operating Temperature** 0 ~ 60 °C (32 ~ 140 °F)
- Storage Temperature** -20 ~ 70 °C (-4 ~ 158 °F)
- Storage Humidity** 5 ~ 95% RH, non-condensing

Ordering Information

- USB-4750-CE** 32-ch isolated digital I/O USB module

Accessories

- 1960004544** Wall mount bracket
- 1960005788** VESA mount bracket



USB-4761



Features

- Compatible with USB 1.1/2.0
- Portable
- Bus powered
- 8 x Relay output and 8 x isolated digital input channels
- LED indicators to show activated relays
- 8 x Form C-type relay output channels
- High-voltage isolation on input channels (2,500 V_{DC})
- High ESD protection (2,000 V)
- Wide input range (5 ~ 30 V_{DC})
- Interrupt handling capability
- Detachable screw terminal on modules
- Suitable for DIN rail mounting
- 1 x Lockable USB cable included for connection security

Specifications

Isolated Digital Input

- Channels** 8
- Input Voltage** Logic 0: 2 V max.
Logic 1: 5 V min. (30 V max.)
- Isolation Protection** 2,500 V_{DC}
- Opto-Isolator Response** 50 μs

Relay Output

- Contact Rating** 0.25 A @ 240 V_{AC}, 1 A @ 30 V_{DC}
- Max. Switching Power** 62.5 VA, 60 W
- Max. Switching Voltage** 250 V_{AC}, 220 V_{DC}
- Max. Switching Current** 5 A
- Operate/Release Time** max. 5 / 4 ms
- Life Expectancy (Electrical)** 5 x 10⁷ cycles typ. @ 10 mA/12 V
2 x 10⁶ cycles typ. @ 2000 mA/30 V

General

- Bus Type** USB 1.1/2.0
- I/O Connector** Onboard screw terminal
- Dimensions (L x W x H)** 132 x 80 x 32 mm (5.2" x 3.15" x 1.26")
- Power Consumption** Typical: 5 V @ 60 mA
Max.: 5 V @ 400 mA
- Operating Temperature** 0 ~ 60 °C (32 ~ 140 °F)
- Storage Temperature** -20 ~ 70 °C (-4 ~ 158 °F)
- Storage Humidity** 5 ~ 95% RH, non-condensing

Ordering Information

- USB-4761-CE** 8-ch relay/isolated digital input USB module

Accessories

- 1960004544** Wall mount bracket
- 1960005788** VESA mount bracket